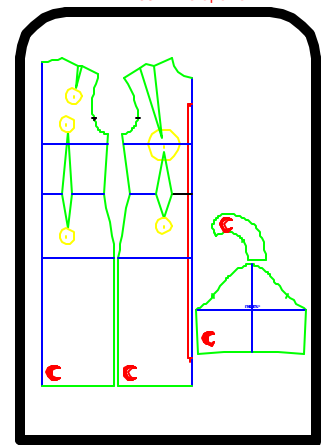
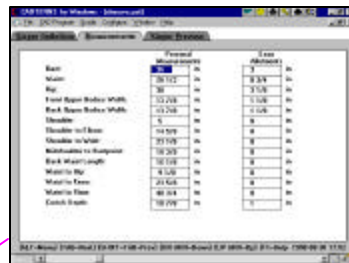


Start

Metamorphosis of a Personal Sloper



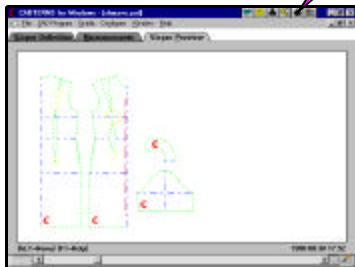
Finish



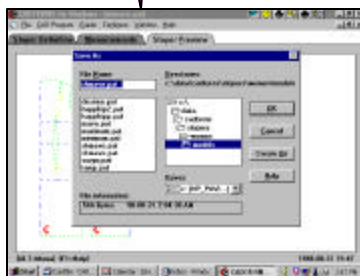
2. Measurements
and
Ease



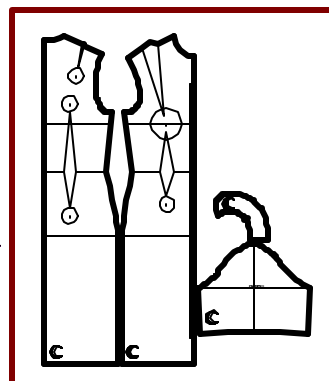
1. Preferences
and
Variables



3. Preview



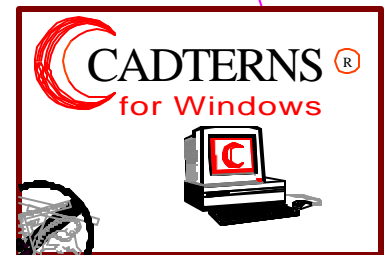
4. Save



5. Print

- Start CADTERN'S.
Sloper Definition folder appears.
1. Choose preferences and enter variables.
Open Measurements folder.
 2. Modify measurements or ease, if desired.
Open Sloper Preview folder.
 3. Preview sloper pattern.
From the main menu, select Save As.
 4. Identify the sloper, and its owner.
CADTERN'S creates a PAT file with this name.
 5. From the main menu, select Print.
CADTERN'S prints pattern on printer as appears in Print Setup.

6. Cut and sew sloper to test fit.
If adjustments are needed, then do one of the following:
 - revise measurements or ease (in CADTERN'S)
 - adjust sloper drawing at computer (with CAD)
 - draw adjustments on pattern (by hand)



Start